

**ATUL VIDYA MANDIR WARDHA'S**



**RAJARSHEE SHAHU SCIENCE COLLEGE**

**Chandur Railway, Dist – Amravati, Maharashtra**



*Affiliated to*

**Sant Gadge Baba Amravati University, Amravati**



**2<sup>nd</sup> Cycle**

**Assessment & Accreditation by NAAC**

**Criterion: VI - Governance, Leadership and Management**

**6.2 Strategy Development and Deployment**

**Q<sub>1</sub>M – 6.2.1**

The institutional perspective plan is effectively deployed and functioning of the institutional bodies is effective and efficient as visible from policies, administrative setup, appointment, service rules and procedures etc.



Atul Vidya Mandir, Wardha's  
**Rajarshee Shahu Science College**

Virul Road, Chandur Rly, Dist. Amravati PIN - 444 904

(College Code : 807)

PRESIDENT

Prof. Mrs. Uttaratai V. Jagtap

SECRETARY

Prof. Virendrabhau W. Jagtap

PRINCIPAL

Dr. M.P. Chikhale

Website : [www.rssc.edu.in](http://www.rssc.edu.in) | Email : [rajarsheeshahucollege@rediffmail.com](mailto:rajarsheeshahucollege@rediffmail.com) | [rsscprincipal@gmail.com](mailto:rsscprincipal@gmail.com) | ☎ (Office) 07222-254111

Ref. No. RSSC/132/23

Date: 17.03.2023

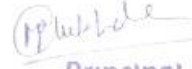
**Declaration**

The information, reports, true copies of the documents, numerical data, etc furnished in this file is verified by IQAC and found correct.

  
IQAC Co-ordinator  
Rajarshee Shahu Science College  
Chandur Rly., Dist. Amravati

(Dr. Minal Keche)



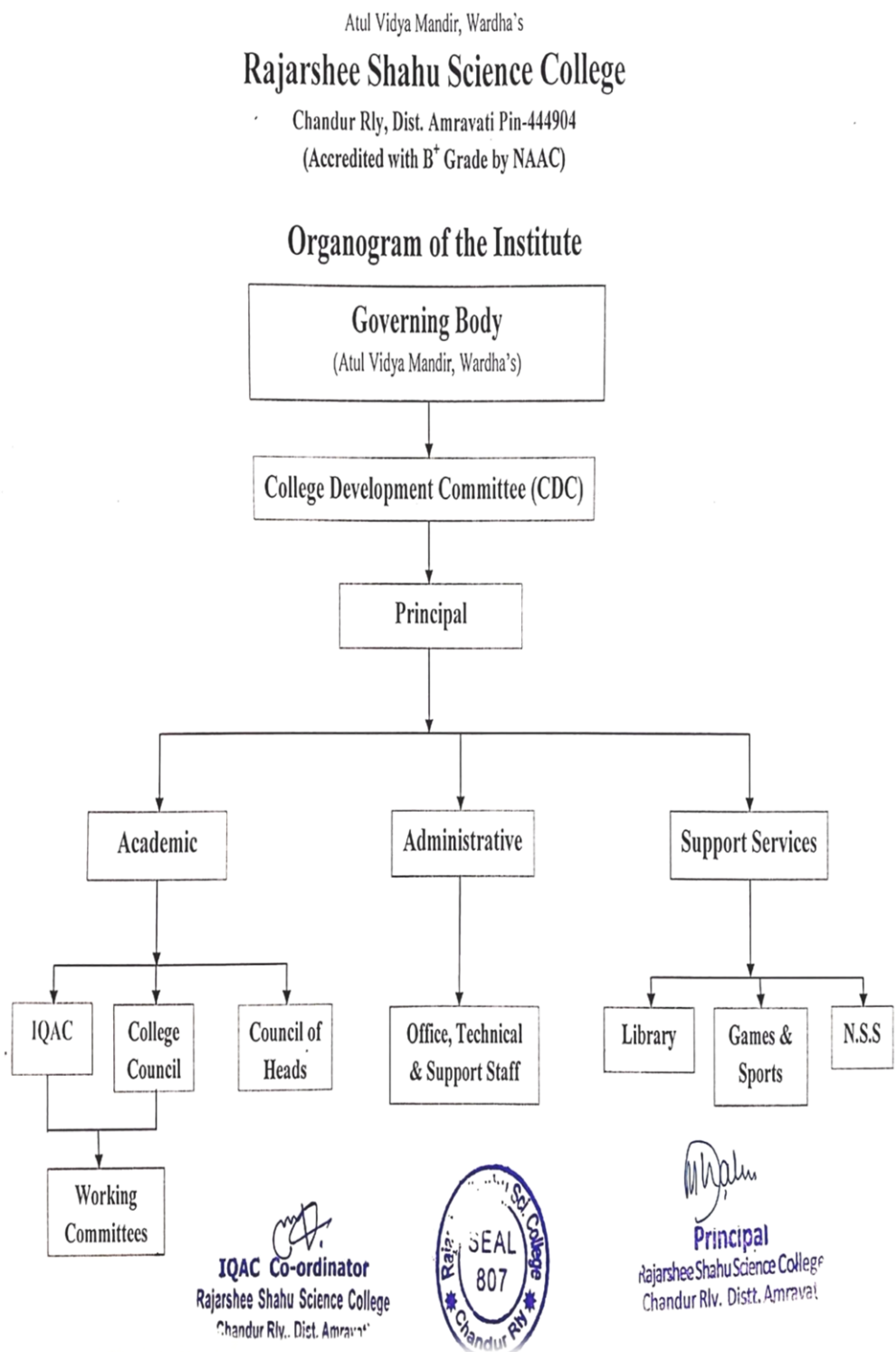
  
Principal  
Rajarshee Shahu Science College  
Chandur Rly., Dist. Amravati

(Dr. Mahesh Chikhale  
Chairman IQAC and Principal)

**Criterion: 6- Governance, Leadership and Management****6.2.1**

<b>CONTENT</b>	<b>Page No.</b>
<b>Institutional perspective Plan and deployment</b>	
❖ <b>Organogram of the Institute</b>	<b>1</b>
❖ <b>Perspective Plan for 2017-2022</b>	<b>2</b>
❖ <b>Perspective Plan and Deployment</b>	<b>3 - 4</b>
❖ <b>Perspective Plan for 2023-2027</b>	<b>5</b>

## Organogram of the Institute



## *Strategic/ perspective plan*

Atul Vidya Mandir, Wardha's

### **Rajarshee Shahu Science College**


Chandur Rly, Dist. Amravati Pin-444904

(Accredited with B<sup>+</sup> Grade by NAAC)

#### **Strategic/ Perspective Plan of the Institute**

**For Session 2017-22**

- Organization of National/International Level Conferences and Workshops.
- Creation of fitness centre.
- Enhancement of teacher quality.
- Mobilization of research culture.
- Promotion of student teacher exchange.
- Adoption of innovative methods of teaching.
- Exploration of environmental consciousness among civilians.
- Inculcation of leadership quality in students.
- Introduction of PG courses.

  
**IQAC Co-ordinator**  
Rajarshee Shahu Science College  
Chandur Rly., Dist. Amravati

  
**Principal**  
Rajarshee Shahu Science College  
Chandur Rly Distt. Amravati

### Strategic / perspective plan and Deployment

Perspective Plan	Deployment
Organization of National/International Level Conferences Workshops/Webinars (Seminars)	Organized National Multidisciplinary e-Conference on "Research in Science and Technology for Sustainable Development"
	Organized various Workshops and seminars on different subjects
Infrastructure	Levelling of ground
	Gymnasium has been Constructed
	Gymnasium Equipments has been purchased
	New lavatory and common room has been constructed
	The infrastructural facilities are updated as per the requirement.
	CCTV setup has been installed covering Important area of the campus.
	Laboratories upgraded with more equipments as per the requirement.
Enhancement of teacher quality	The college supports the teachers to attend refresher/orientation/FDP held outside the college campus by reimbursing the registration fees.
	Organized various workshops and seminars for enhancing teacher quality.
Mobilization of research culture	Teaching faculties have published research papers in various National/ International journals. Some books have been published and one faculty have completed and 4 registered for Ph. D.
	5 faculties have been recognised as Research guide.
	Students have been motivated to participate in AVISHAKAR a university level research competition.
	IPR workshops have been organized for Teachers and students as well.
	Students were encouraged for student research projects.
Promotion of student teacher exchange	SAFE Programme has been Organized.
	MOU has been signed with institution.
Adoption of innovative methods of teaching	Recruited 6 teaching faculties during this cycle of reaccreditation.
	More use of ICT tools in teaching.
Rajarshee Shahu Science College, Chandur Railway, Dist.- Amravati, Maharashtra ( 6.2 Strategy Development and Deployment)	


	E-content has been developed by some faculties using tools such as PPT, video clips, you tube, socialmedia etc.
	Google Classroom has been used
	Mentoring scheme has been introduced since Academic Year 2019-20
	Continuous internal evaluation was carried out by various practices like periodical tests, assignments, tutorials, seminars, group discussion ,study tours etc.
<b>Exploration of Enviournmental consequences among civilians</b>	Various programmes on protection and conservation of environment were organized.
	Tree Plantation programs were regularly organized.
<b>Inculcation of leadership quality in students</b>	Students were encouraged to participate in every programme of the college.
	Subject wise Student Associations are formed.
	Special training organised for participation in parliament yuvak biradari.
	The NSS and various committees of the college carried out various extension activities in and outside the college campus to inculcate leadership quality in students.
	Students are included as representatives in Various administrative committees of the college.
<b>Introduction of PG courses</b>	Applied for PG Courses to University.



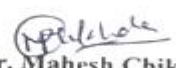
## Perspective Plan for the Next Five Years (2023-2027):

1. **Curriculum Development:** To enhance the curriculum by introducing more skill-based courses and practical learning experiences that aligns with the new education policy (NEP) and can better equip students to meet the needs of the global job market. To introduce the PG courses beneficial for students seeking career advancement, research opportunities and personal growth.
2. **Technology integration:** To integrated technology into the learning process to keep pace with the digital era, so that students have access to the latest technology and can learn using digital tools and platforms.
3. **Faculty Development:** To focus on the professional development of the faculty members by providing training and development opportunities, encouraging research and publication, and recognizing and rewarding excellence in teaching.
4. **Infrastructure Development:** To upgrade the college's infrastructure facilities to improve the learning experience of students by upgrading classrooms, laboratories, libraries, and other facilities.
5. **Collaboration:** To increase number of collaboration with other educational institutions and with the industry for carrying out different collaborative activities and to provide students with opportunities for internships and placements.
6. **Research and Innovation:** Encourage faculty members and students to engage in research and innovation in their respective fields of study. Provide the necessary infrastructure and resources for the same.
7. **Social and Environmental Awareness:** Organize regular campaigns and events to raise awareness among students about social and environmental issues. Encourage them to participate in community service activities.
8. **Scholarships and Financial Assistance:** Provide financial assistance to economically disadvantaged students to ensure that they have access to quality education.
9. **Alumni Engagement:** Create a strong alumni network to engage former students and involve them in the college's activities, such as mentoring current students and providing support for various college initiatives.
10. **Quality Assurance:** Conduct regular audits and assessments to ensure that the college is delivering on its mission and vision. Implement measures to address any shortcomings or areas that need improvement.

By implementing the above perspective plan, the college can effectively achieve its vision and mission, and create a better learning environment for students.

  
**Dr. Minal Kechhe**  
 IQAC Coordinator  
 Rajarshee Shahu Science College  
 Chandur Railway, Amravati  
 IQAC Co-ordinator  
 Rajarshee Shahu Science College  
 Chandur Rly., Dist. Amravati



  
**Dr. Mahesh Chikhale**  
 Chairman IQAC and Principal  
 Rajarshee Shahu Science College  
 Chandur Railway, Amravati  
**Principal**  
 Rajarshee Shahu Science College  
 Chandur Rly. Distt. Amravati